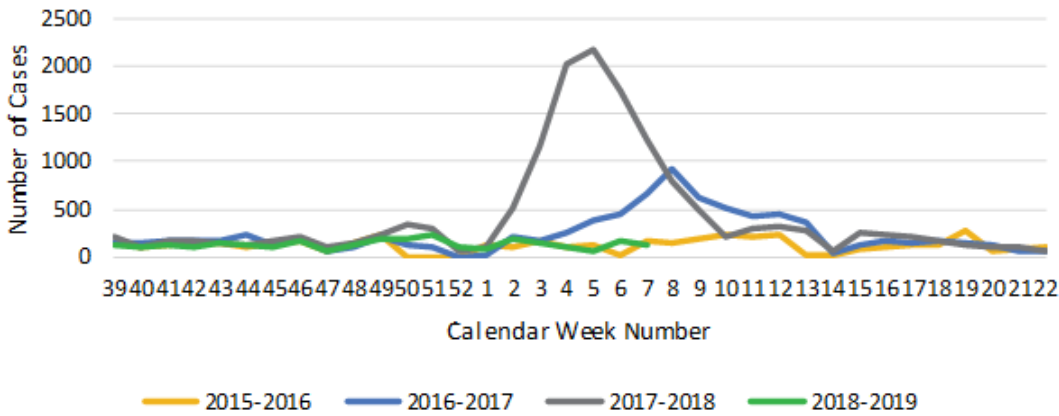


Weekly Influenza Trends

Week 7 Ending February 16, 2019

Number of Cases of Lab Confirmed Influenza and Influenza-Like Illness by Calendar Week and Flu Season, Kalamazoo County

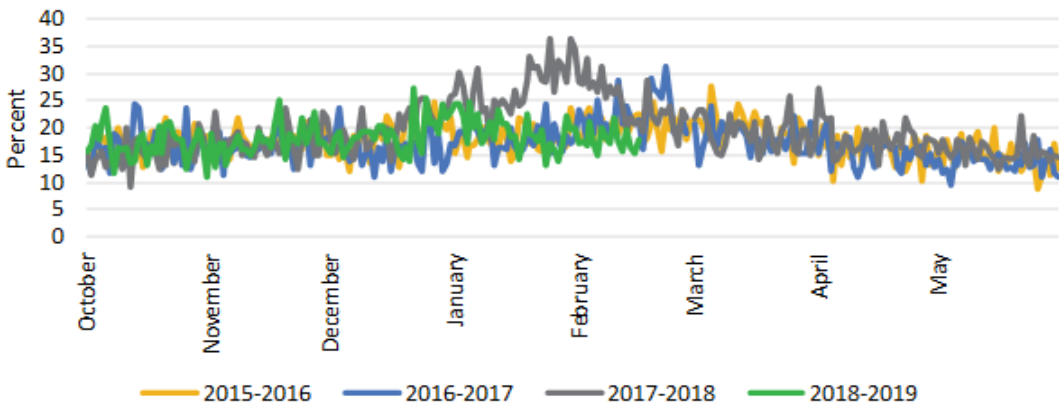


The number of cases of lab confirmed influenza and influenza-like illness (ILI) reported is lower than the previous two flu seasons and is consistent with the 2015-2016 flu season.

There were seventeen (17) lab confirmed cases of influenza this week.

No pediatric flu deaths occurred this week.

Percentage of Visits to the Emergency Department for Constitutional and Respiratory Complaints by Day and Flu Season, Kalamazoo County



The current percentage of Emergency Department visits for constitutional and respiratory complaints (see definition below) is lower than the 2017-2018 flu season and is consistent with the 2015-2017 flu seasons.

Sources: Michigan Disease Surveillance System—number of cases of lab confirmed influenza and ILI reported by schools, licensed childcare, colleges, healthcare providers and long-term care facilities. Michigan Syndromic Surveillance System (constitutional and respiratory categories)—daily percentage of patients presenting to emergency departments with complaints of influenza-like illness; including chief complaints of fever, weakness, dizziness, flu, lightheadedness, chills, cough, wheezing, sore throat, cold, sinus and congestion.

CDC Determined State-Wide Flu Activity for Michigan

Widespread: Outbreaks of influenza or increases in ILI cases and recent laboratory-confirmed influenza in at least half the regions of the state with recent laboratory evidence of influenza in the state.

Further information can be found at <http://www.michigan.gov/flu>.



KALAMAZOO COUNTY GOVERNMENT

In the Pursuit of Extraordinary Governance

Health and Community Services Department

Kalamazoo County Health & Community Services is committed to providing equitable, culturally competent care to all individuals served, regardless of race, age, sex, color, national origin, religion, height, weight, marital status, political affiliation, sexual orientation, gender identity, or disability.