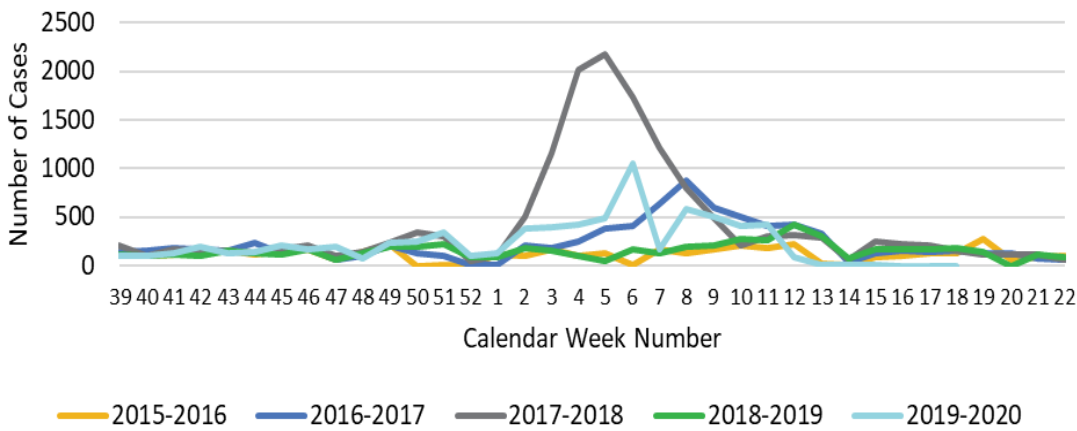


# Weekly Influenza Trends

Week 18 Ending May 2, 2020

Number of Cases of Lab Confirmed Influenza and Influenza-Like Illness by Calendar Week and Flu Season, Kalamazoo County

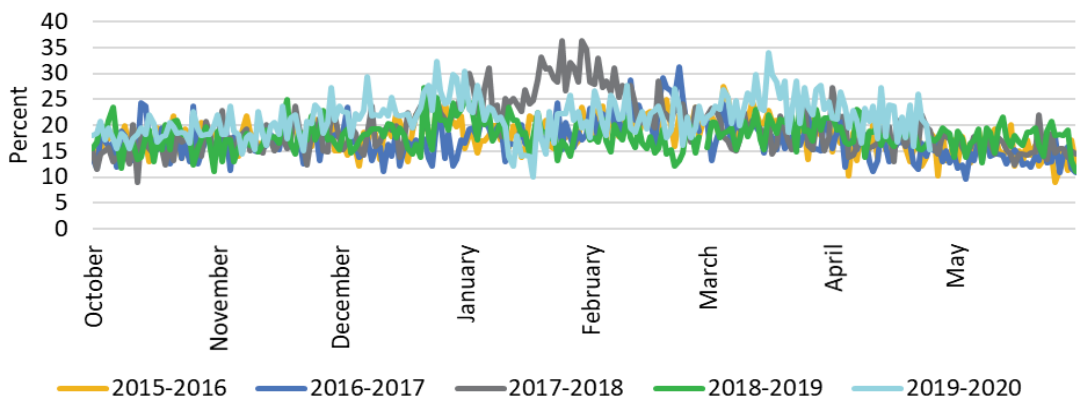


The number of cases of lab confirmed influenza and influenza-like illness (ILI) reported is lower than the past four flu seasons (decrease may be due to COVID-19 testing and measures).

There were zero (0) lab confirmed case of influenza this week.

No pediatric flu deaths occurred this week.

Percentage of Visits to the Emergency Department for Constitutional and Respiratory Complaints by Day and Flu Season, Kalamazoo County



The current percentage of Emergency Department visits for constitutional and respiratory complaints (see definition below) is elevated compared to the past four flu seasons (increase may be due to COVID-19 disease presentation).

**Sources:** Michigan Disease Surveillance System—number of cases of lab confirmed influenza and ILI reported by schools, licensed childcare, colleges, healthcare providers and long-term care facilities. Michigan Syndromic Surveillance System (constitutional and respiratory categories)—daily percentage of patients presenting to emergency departments with complaints of influenza-like illness; including chief complaints of fever, weakness, dizziness, flu, lightheadedness, chills, cough, wheezing, sore throat, cold, sinus and congestion.

## CDC Determined State-Wide Flu Activity for Michigan

Sporadic: Small numbers of laboratory-confirmed influenza cases or a single laboratory-confirmed influenza outbreak has been reported, but there is no increase in cases of ILI.

Further information can be found at <http://www.michigan.gov/flu>.



KALAMAZOO COUNTY GOVERNMENT

In the Pursuit of Extraordinary Governance

Health and Community Services Department

Kalamazoo County Health & Community Services is committed to providing equitable, culturally competent care to all individuals served, regardless of race, age, sex, color, national origin, religion, height, weight, marital status, political affiliation, sexual orientation, gender identity, or disability.