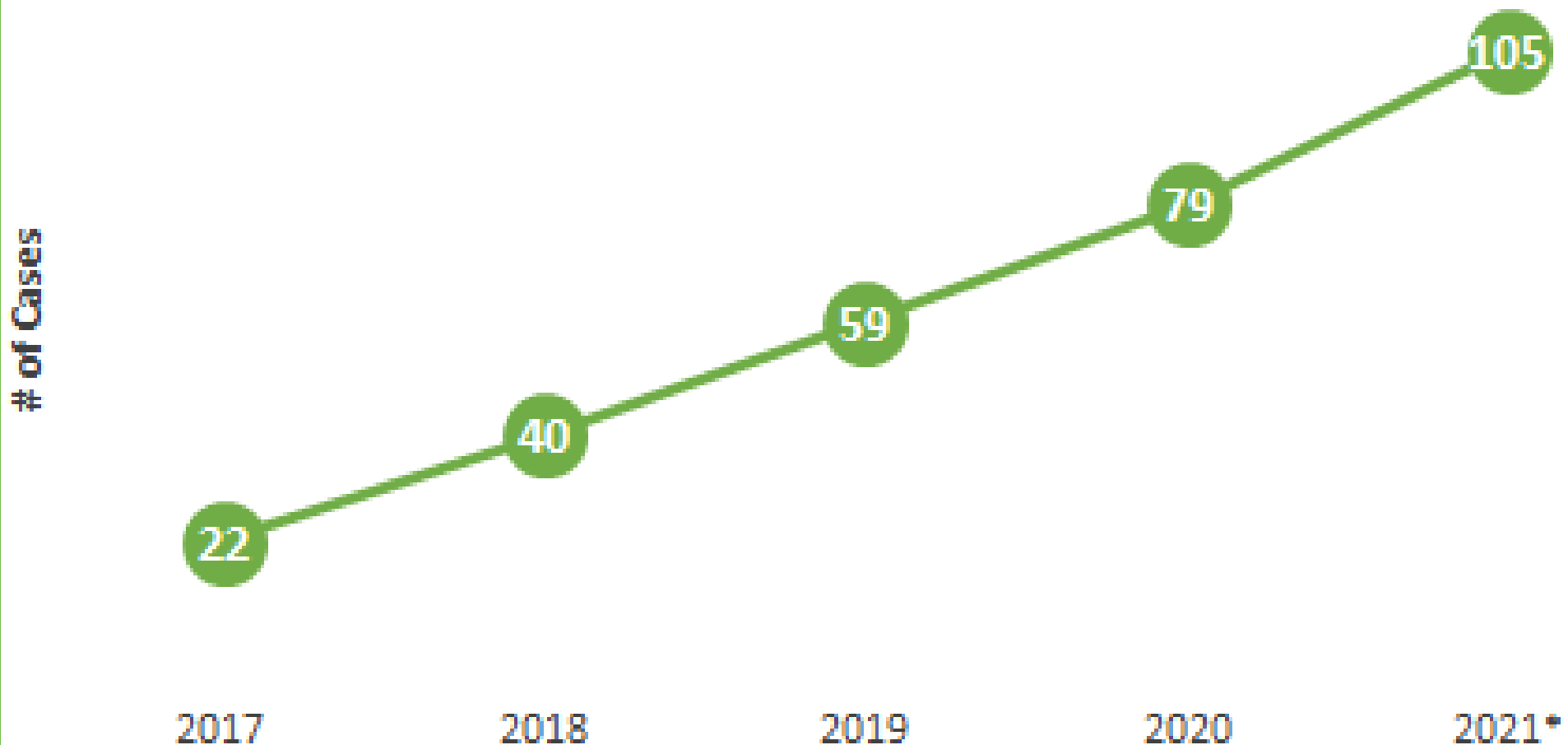


# LYME DISEASE UPDATE

In Kalamazoo County, the number of reported of Lyme Disease cases so far in 2021 is larger than the total number of cases reported each year since 2017. 🦋

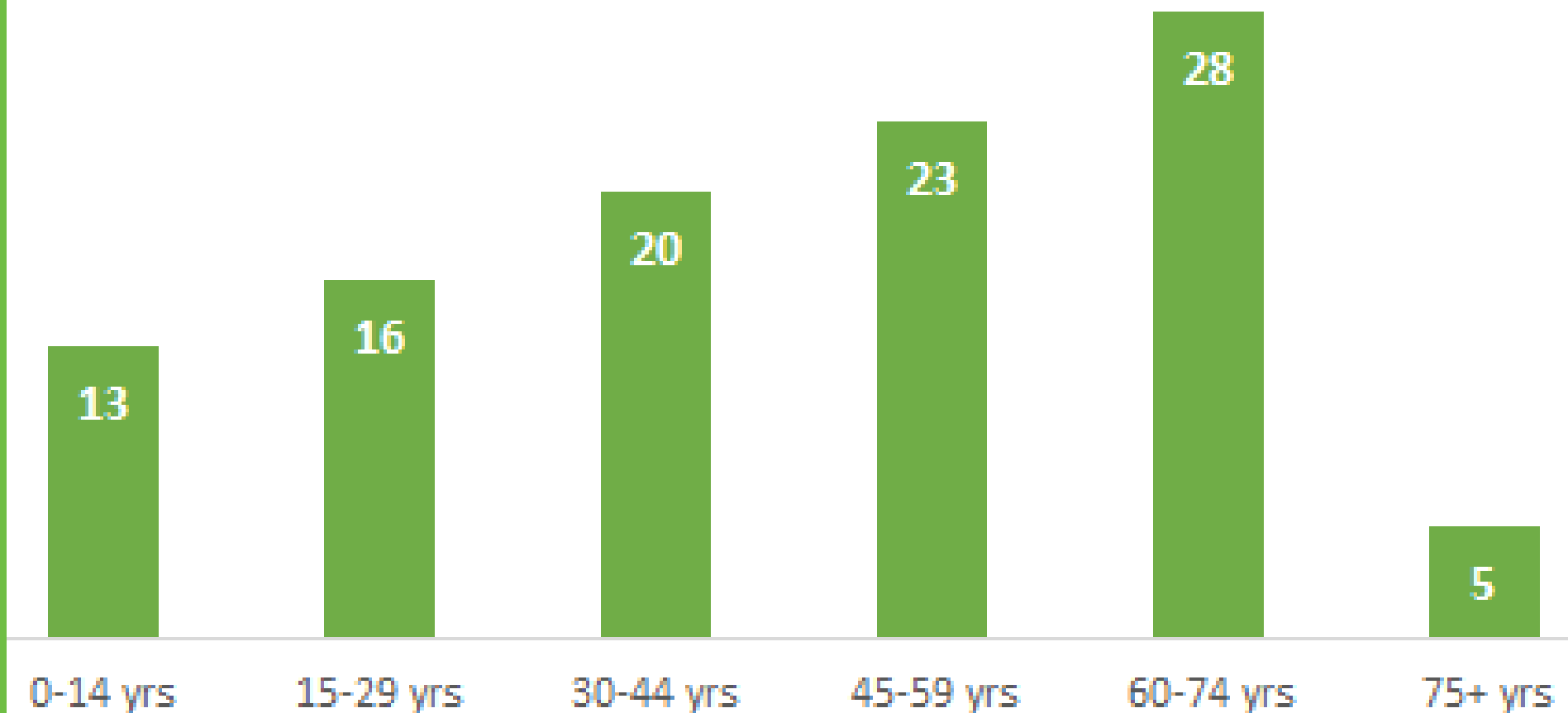
Number of Human Lyme Disease Cases by Year,  
Kalamazoo County 2017-2021\*



\*2021 data is through July 29, data is provisional, Source MDSS

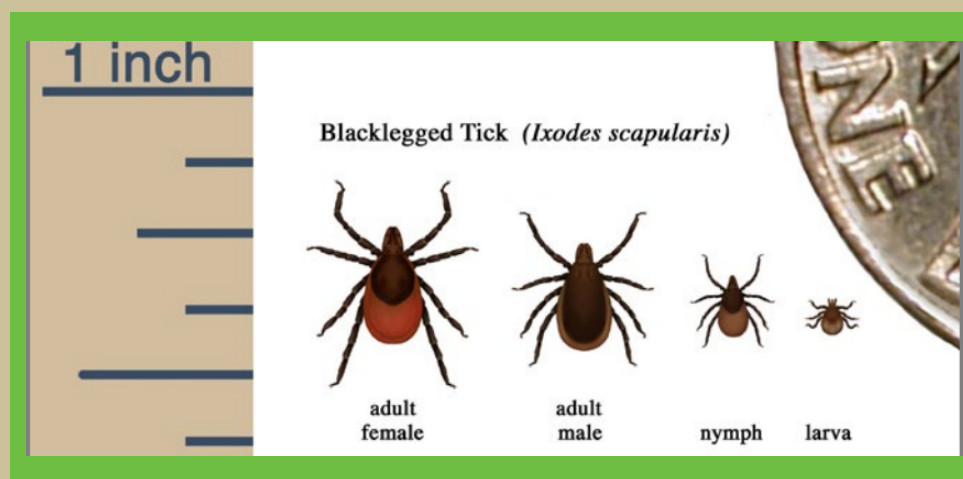
Cases have been identified in all age groups.

## Number of Lyme Disease Cases Reported by Age Group, Kalamazoo County 2021\*

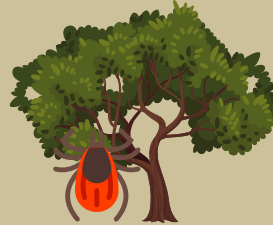


\*2021 data is through July 29, data is provisional, Source MDSS

Lyme disease is spread to people by the bite of an infected blacklegged tick. The tick must be attached for at least 36 hours to transmit disease.



**Lyme disease in Michigan typically occurs from May through August.**



**People who spend time outdoors in wooded areas are most at risk!**

**Common early symptoms include a bulls-eye rash, fever, chills, and muscular pain.**

**Lyme disease can be easily treated with antibiotics.**

**If left untreated, later-stage symptoms such as arthritis and Bell's palsy may appear weeks later.**

# 2021 Michigan Lyme Disease Risk Map

