



## 2022 Kalamazoo County Invasive Group A Strep (iGAS) Data Summary

### Background:

Group A strep bacteria typically cause common and generally mild illnesses like strep throat. When the disease becomes invasive, the bacteria has reached parts of the body where bacteria are not usually found. If this happens, the disease is usually severe, requiring care in a hospital and even causing death in some cases.

As part of routine disease surveillance procedures, HCS staff noticed an increase in the number of cases of iGAS compared to historical averages during fall 2022. Cases were reviewed and no clusters of iGAS infections in high-risk settings or other linkages among cases were identified. No pediatric cases were identified during this time period.

Additionally, during this time, the CDC began looking into an increase in iGAS infections among children in the U.S. At the time of this report, this investigation is ongoing.

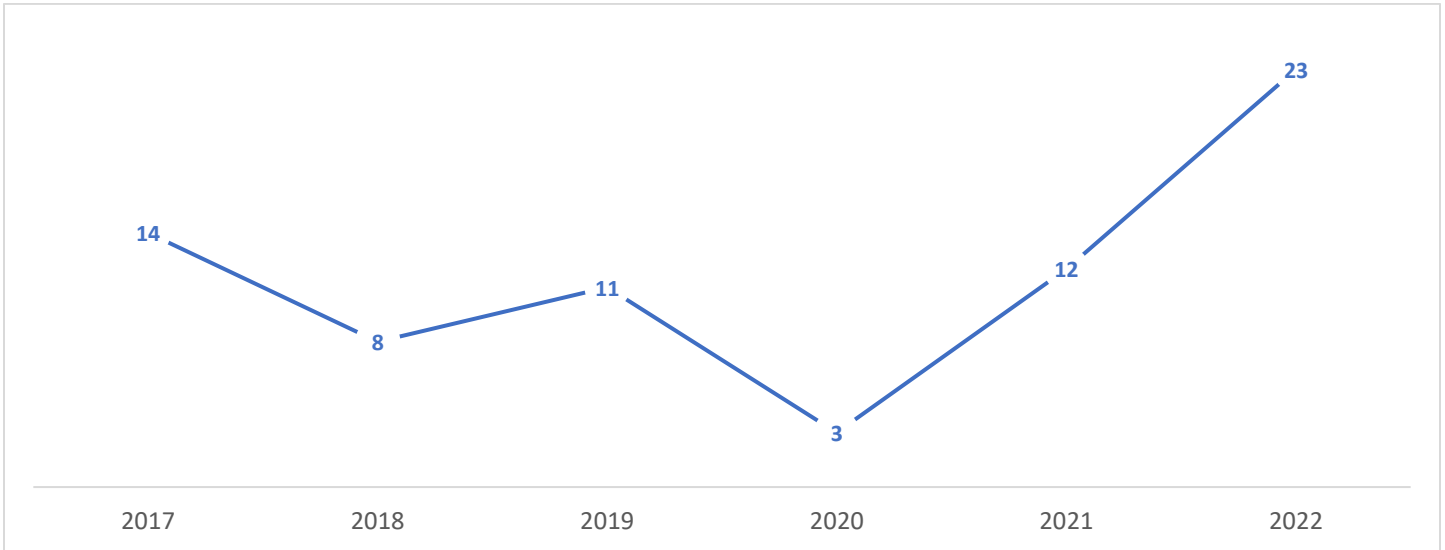
### Data Notes:

The data source for this report is the Michigan Disease Surveillance System (MDSS); accessed on 1/27/23. Data from 2022 is considered provisional and subject to change. Cases were selected using the following criteria: referral date; case status=confirmed; investigation status=active, completed, completed-follow up, new, review.

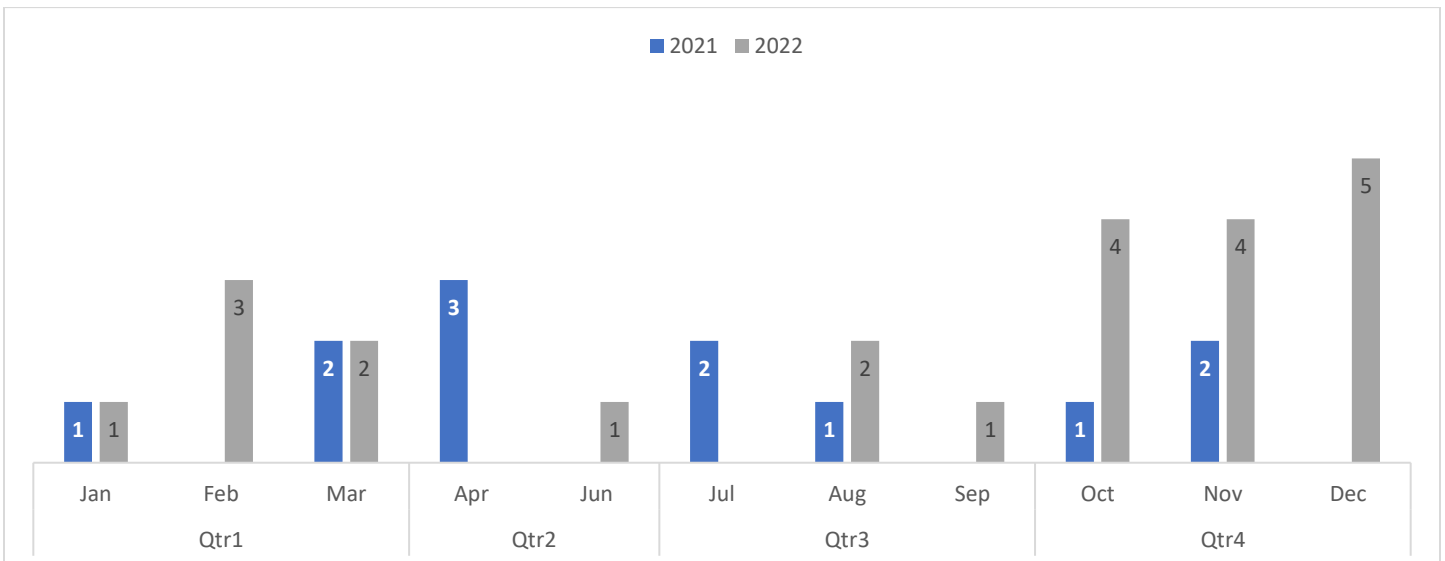
**Report Date: 2/2/23**

## Number of Cases by Year and Month

The number of iGAS cases reported increased 92% between 2021 and 2022 in Kalamazoo County.

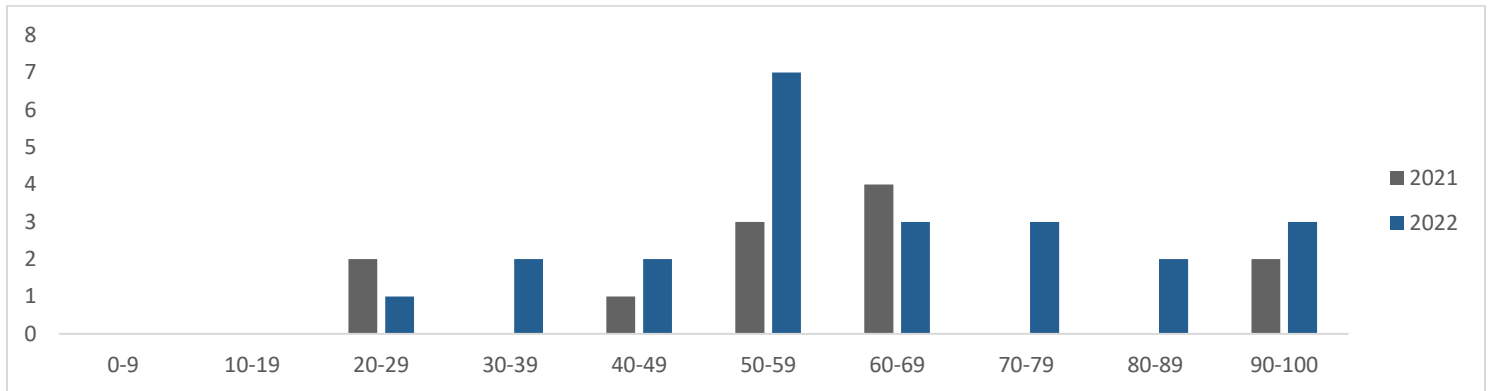


During the fall of 2022 (Q3) an increase in the number of reports of iGAS compared to five-year historical averages was identified. The graph below shows a comparison of case counts in the county between 2021 and 2022 by month.



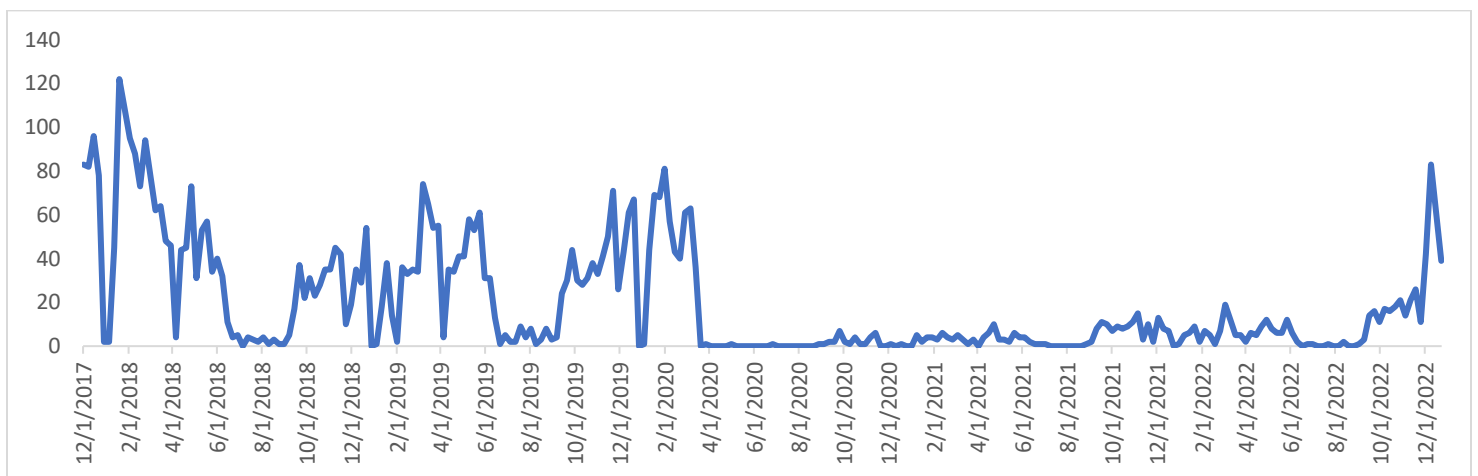
## Number of Cases by Age Group by Year

No pediatric cases of invasive group A strep were reported during 2022; 88% of the total iGAS cases were aged 50+ years. All cases were hospitalized during their illness and the majority of cases had at least one underlying condition. No clusters of iGAS infections in high-risk settings or other linkages among cases were identified.



## Strep Throat

During December of 2022, the number of reports of **strep throat (non-invasive)** received through the county school-based reporting system increased. However, the number of cases was within historical norms (although higher than the past two years). Reports received through this system are based on parental reports and do not represent a diagnosis by a healthcare provider.



## Additional Information

For more information about group A strep and invasive group A strep visit [www.cdc.gov/groupastrep](http://www.cdc.gov/groupastrep)