



KALAMAZOO COUNTY GOVERNMENT

In the Pursuit of Extraordinary Governance...

**NEWS RELEASE
FOR IMMEDIATE RELEASE**
September 4, 2018

Matt Johnson, Public Information Officer
pio@kalcounty.com
269-373-5271

September 4, 2018: Daily Update on the Parchment Water Response

KALAMAZOO, MI— The Kalamazoo County Health & Community Services Department will provide a news release each day at 4:00 p.m. for the community with the latest information, and report on the daily activities surrounding the Parchment Water Response.

PFAS Filter Distribution

Last week Plumbers & Pipefitters Local 357 volunteered to install 109 PFAS water filters for residents in Parchment and Cooper Township. Another 220 PFAS filters will be distributed this week to those within the DEQ Investigation area (See map on Page 3: inside area of purple dashed lines) with residential wells. These filters will come with contact information for personnel authorized to install PFAS filters. The invoices for filter installation can be forwarded to Kalamazoo County Health & Community Services Department's Environmental Health Unit.

Residents with a private residential water well that are East of Kalamazoo River and within the 1.5 mile radius (See map on Page 3: outside of area shown by the purple dashed lines and inside the green dashed lines) will continue to be provided water services. Kalamazoo County Health & Community Services Department will be in contact with residents within this area to arrange bottled water service to be provided to you at no cost until a long-term water supply is secured or it is determined that your water supply is approved for use. If you need bottled water between now and until Thursday, September 6, then please call Cooper Township Fire Chief Terry Emig at 269-806-5123, Cooper Township Supervisor Jeff Sorensen at 269-207-1156, or Chad King at 269-873-5899.

Water Distribution

The water distribution center officially closed August 30, 2018. From July 27 to August 30, 825 volunteers provided 3,115 volunteer hours at the distribution center. In total, around 32,800 cases of water were distributed.

Parchment Water Hotline: 269-373-5346

The Parchment Water Hotline will continue to be available for residents to call Monday through Friday, 8:00 a.m. to 5:00 p.m. until Friday, September 7. If you have further questions after September 7, please call the Kalamazoo County Health & Community Services Department's Environmental Health Unit at 269-373-5200.

HEALTH AND COMMUNITY SERVICES DEPARTMENT

Parchment Water Hotline: 269.373.5346

www.facebook.com/KalamazooCountyHCS | www.kalcounty.com/hcs

On August 31, there were 34 total calls at an average of just under 4 per hour.

Residential Water Wells

*The following information for Residential Water Wells is the same information from the August 29 news release. It is being included again due to the importance of information for residents.

With the Parchment municipal water system back in operation, the top priority is protecting the remaining members of the public who depend on private wells for their drinking water from unacceptable levels of PFAS contamination.

To date, DEQ has taken 202 residential well samples in Parchment and Cooper Township and found no PFOS and PFOA contamination over the EPA Health Advisory Level of 70 ppt outside of a one-mile radius from the former Parchment municipal well field. However, DEQ has received some results at the outer edge of the one-mile radius with total PFAS results over 70 ppt. The highest of these results was 122 ppt.

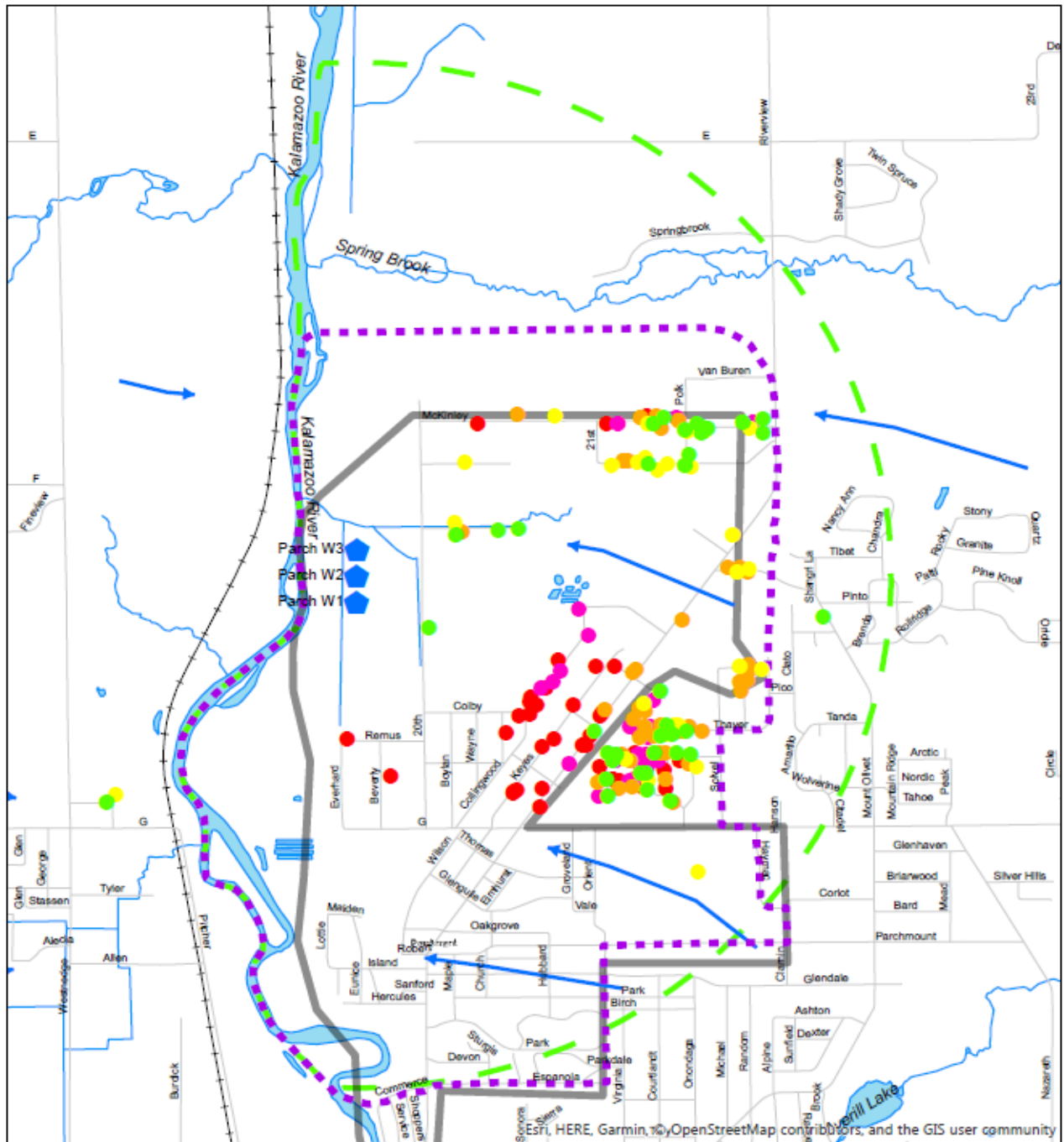
DEQ's review of groundwater flow in the area shows groundwater flowing toward Kalamazoo River, downhill from the higher elevations east of Riverview Avenue. These groundwater flow characteristics correspond with rapidly falling PFAS results being seen east of Riverview Avenue.

Inside the 1.5-mile radius, the area of greatest concern for significant PFAS contamination is roughly bounded by the south bank of Spring Brook Creek, the east bank of the Kalamazoo River, the north side Espanola Avenue and the west side of Riverview Avenue, including properties east of Riverview and west of Lindenwood and Solvel streets. Private well owners inside this area of concern will continue to receive alternative water until point-of-use filters can be installed in their homes.

If you live outside the area shown by the purple dashed line, and within the area shown by the green dashed line, you can get water delivered to your home. Kalamazoo County Health & Community Services Department will be in contact with residents within this area to arrange bottled water service to be provided to you at no cost until a long-term water supply is secured or it is determined that your water supply is approved for use.

The PFAS investigation is continuing. It includes more testing in the area. More information and updates will be provided each day when the Kalamazoo County Health & Community Service's Department (HCS) sends the 4:00 p.m. news release. Residents can also follow www.facebook.com/KalamazooCountyHCS/ or visit www.kalcounty.com/hcs/pfasresponse.php.

Parchment Water Response - Investigation Area



8-28-2018

0 0.13 0.25 0.5 Miles

- Parchment Municipal Wells
- Regional Groundwater Flow Direction
- Parchment Investigation Area
- Parchment Municipal Wells 1.5 Mile Buffer
- Parchment Water Service Area
- Non-Detect
- >1-10
- >10-40
- >40-70
- >70

###

Kalamazoo County Government
Health & Community Services Department

Like [Kalamazoo County Health & Community Services](#) Follow us [@KzooHealth](#)