



# KALAMAZOO COUNTY GOVERNMENT

In the Pursuit of Extraordinary Governance...

**NEWS RELEASE  
FOR IMMEDIATE RELEASE**  
September 5, 2018

Matt Johnson, Public Information Officer  
pio@kalcounty.com  
269-373-5271

## **September 5, 2018: Daily Update on the Parchment Water Response**

KALAMAZOO, MI— The Kalamazoo County Health & Community Services Department will provide a news release each day at 4:00 p.m. for the community with the latest information, and report on the daily activities surrounding the Parchment Water Response.

### **PFAS Filter Distribution**

Another 220 PFAS filters will be distributed this week to those within the DEQ Investigation area (See map on Page 2: inside area of purple dashed lines) with residential wells. These filters will come with contact information for personnel authorized to install PFAS filters. The invoices for filter installation can be forwarded to Kalamazoo County Health & Community Services Department's Environmental Health Unit.

Residents with a private residential water well that are East of Kalamazoo River and within the 1.5 mile radius (See map on Page 2: outside of area shown by the purple dashed lines and inside the green dashed lines) will continue to be provided water services. Kalamazoo County Health & Community Services Department will be in contact with residents within this area to arrange bottled water service to be provided to you at no cost until a long-term water supply is secured or it is determined that your water supply is approved for use. If you need bottled water between now and until Thursday, September 6, then please call the Parchment Water Hotline at 269-373-5346.

### **Parchment Water Hotline: 269-373-5346**

The Parchment Water Hotline will continue to be available for residents to call Monday through Friday, 8:00 a.m. to 5:00 p.m. until Friday, September 7. If you have further questions after September 7, please call the Kalamazoo County Health & Community Services Department's Environmental Health Unit at 269-373-5200.

On September 4, there were 25 total calls at an average of just under 3 per hour.

The PFAS investigation is continuing. It includes more testing in the area. More information and updates will be provided each day when the Kalamazoo County Health & Community Service's Department (HCS) sends the 4:00 p.m. news release. Residents can also follow [www.facebook.com/KalamazooCountyHCS/](https://www.facebook.com/KalamazooCountyHCS/) or visit [www.kalcounty.com/hcs/pfasresponse.php](http://www.kalcounty.com/hcs/pfasresponse.php).

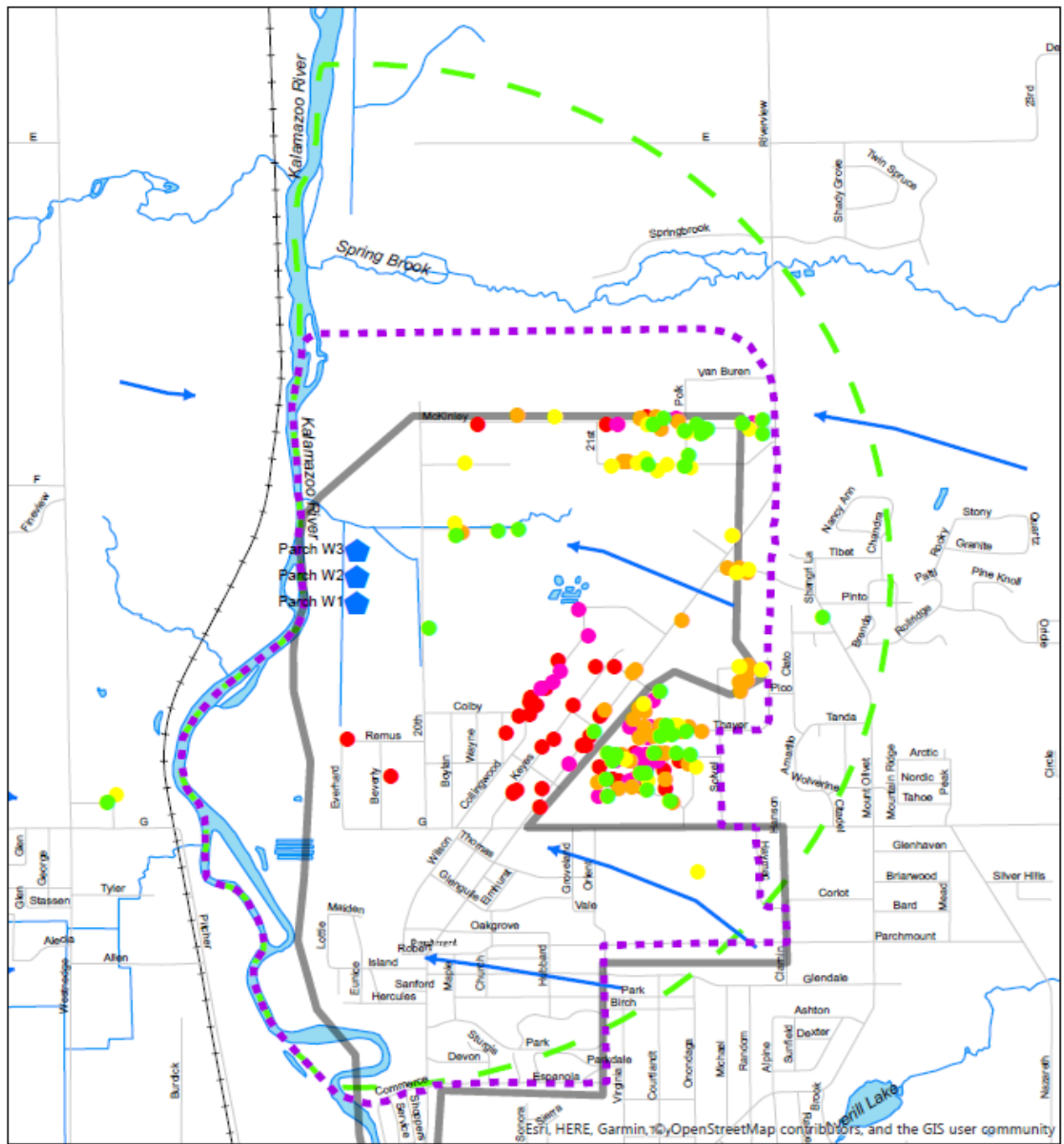
---

## **HEALTH AND COMMUNITY SERVICES DEPARTMENT**

**Parchment Water Hotline: 269.373.5346**

[www.facebook.com/KalamazooCountyHCS/](https://www.facebook.com/KalamazooCountyHCS/) | [www.kalcounty.com/hcs](http://www.kalcounty.com/hcs)

# Parchment Water Response - Investigation Area



8-28-2018

0 0.13 0.25 0.5 Miles

- Parchment Municipal Wells
  - Regional Groundwater Flow Direction
  - Parchment Investigation Area
  - Parchment Municipal Wells 1.5 Mile Buffer
  - Parchment Water Service Area
- Total PFAS (ppt) as of 8/28/2018
- Non-Detect
  - >1-10
  - >10-40
  - >40-70
  - >70

###

Kalamazoo County Government  
 Health & Community Services Department

Like [Kalamazoo County Health & Community Services](#) Follow us [@KzooHealth](#)